

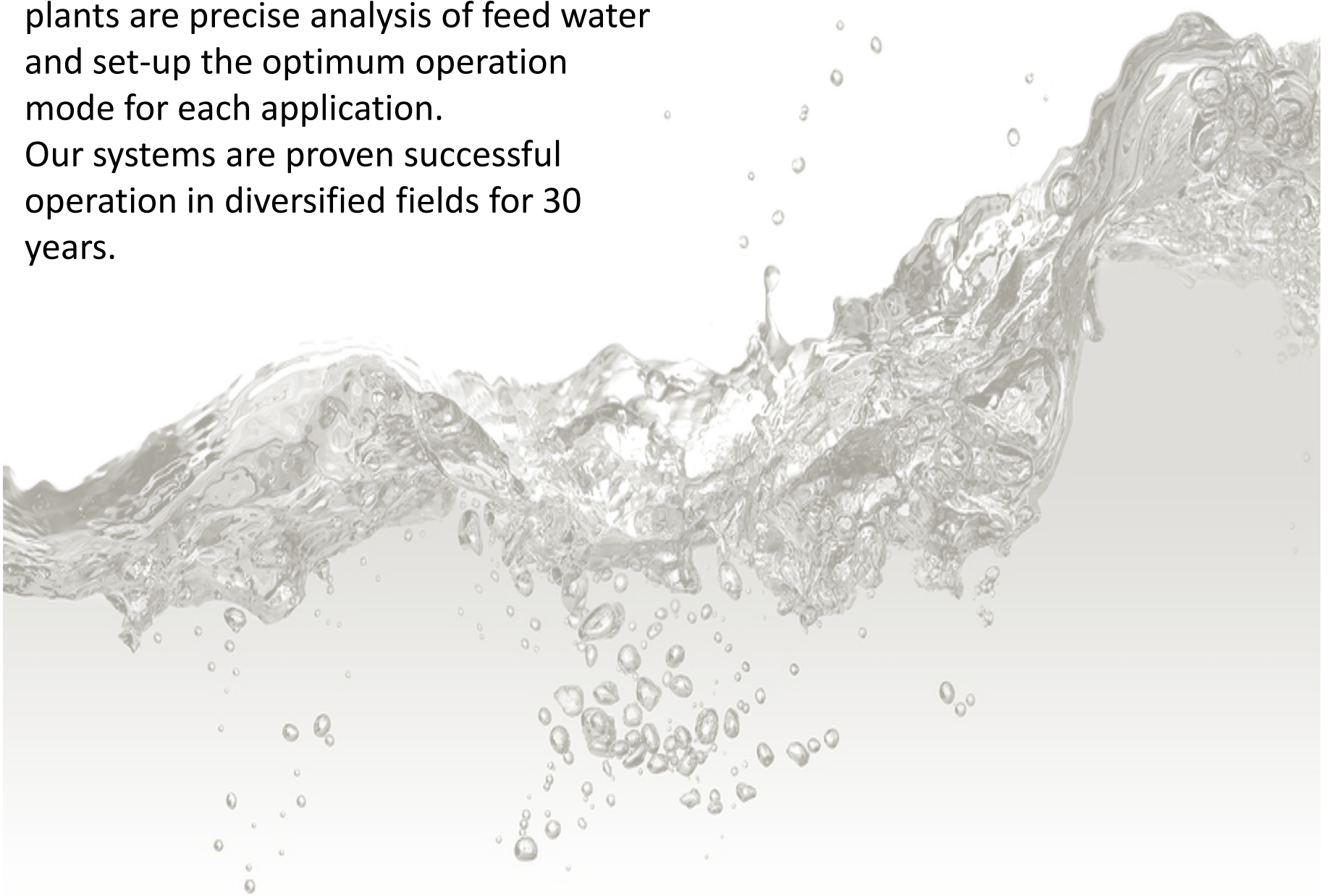
PRODUCT PORTFOLIO

An Introduction for
our Product's Reference Lists
and Information



Water Treatment Plant

The first priority for successful design and operation of water treatment plants are precise analysis of feed water and set-up the optimum operation mode for each application. Our systems are proven successful operation in diversified fields for 30 years.



PRODUCT PORTFOLIO

Seawater Desalination Plant for CEBU Power Plant

APPLICATION

- Power plant

WATER QUALITY

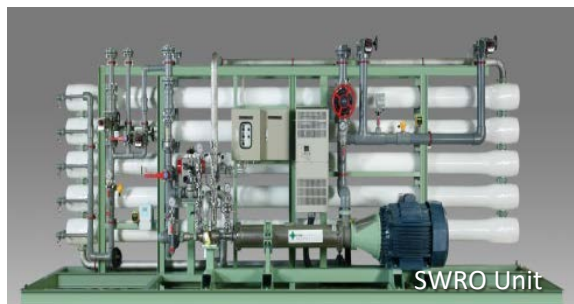
- Meets or exceed drinking water quality of latest edition of STANAG2136

CAPACITY

- From Seawater
: 1,000ton/day
(250ton/day X 4 bocks)

SPECIFICATION

- RO Membrane
: TFC Spiral wound, 8" dia
- Energy recovery system
: Turbo-charger



END USER / YEAR

- Cebu Power Plant(KEPCO)
- Cebu, Philippines
- Deployed in 2009

DESIGN CONCEPT

- System Consist : UF UNIT + SWRO UNIT + BWRO UNIT
- Seawater desalination for drinking water production

PRODUCT PORTFOLIO

Seawater Desalination Plant For CJJV/TORAY PNG LNG

APPLICATION

- LNG power plant

WATER QUALITY

- Meets or exceed drinking water quality of latest edition of STANAG2136

CAPACITY

- From Seawater
: 4,000ton/day
(1,000ton/day X 4 blocks)

SPECIFICATION

- RO Membrane
: TFC Spiral wound, 8" dia
- Energy recovery system
: Turbo-charger



END USER / YEAR

- CJJV/Toray, Japan
- Papua New Guinea
- Deployed in 2010

DESIGN CONCEPT

- System Consist : Pretreatment(DMF) UNIT + SWRO UNIT
- Seawater desalination for drinking water production

PRODUCT PORTFOLIO

Water Treatment System Power Plant for KIMCHEON Multi Power Plant

APPLICATION

- Process water production
- Brackish water treatment

WATER QUALITY

- Less than 10 ppb TDS

CAPACITY

- From UF Module
: 166ton/hour
- From RO Module
: 146ton/day
- From MBP Module
: 98 ton/day

SPECIFICATION

- Dimensions
UF UNIT
: 3,700 x 1,900 x 3,300 mm

BWRO UNIT
: 7,000 x 2,700 x 3,300 mm



END USER / YEAR

- Lucent Engineering Co.,LTD
- Gimcheon City, Korea
- Deployed in 2011

DESIGN CONCEPT

- Compact System Footprint
- High capacity
- Easy maintenance
- Safe and reliable

PRODUCT PORTFOLIO

Water Reuse Pilot Plant for KICT

APPLICATION

- Research and Development
: Water recycle

WATER QUALITY

- Less than 100 ppm TDS

CAPACITY

- From NF Module
: 72ton/day

SPECIFICATION

- Dimensions
: 2,400 x 12,000 x 2,700 mm
- Weight
: 5,500 kg
- Power Consumption
: 30 kW
- Equipment Control
: HMI w/ PLC Control



END USER / YEAR

- Korea Institute of Construction Technology (KICT)
- Paju city, Korea
- Deployed in 2011

DESIGN CONCEPT

- UF/NF membrane facilities
- HMI system for Data Collections
- Containerized system

PRODUCT PORTFOLIO

Seawater Desalination Plant for Philippine Amanpulo Resort

APPLICATION

- Aman Resort

WATER QUALITY

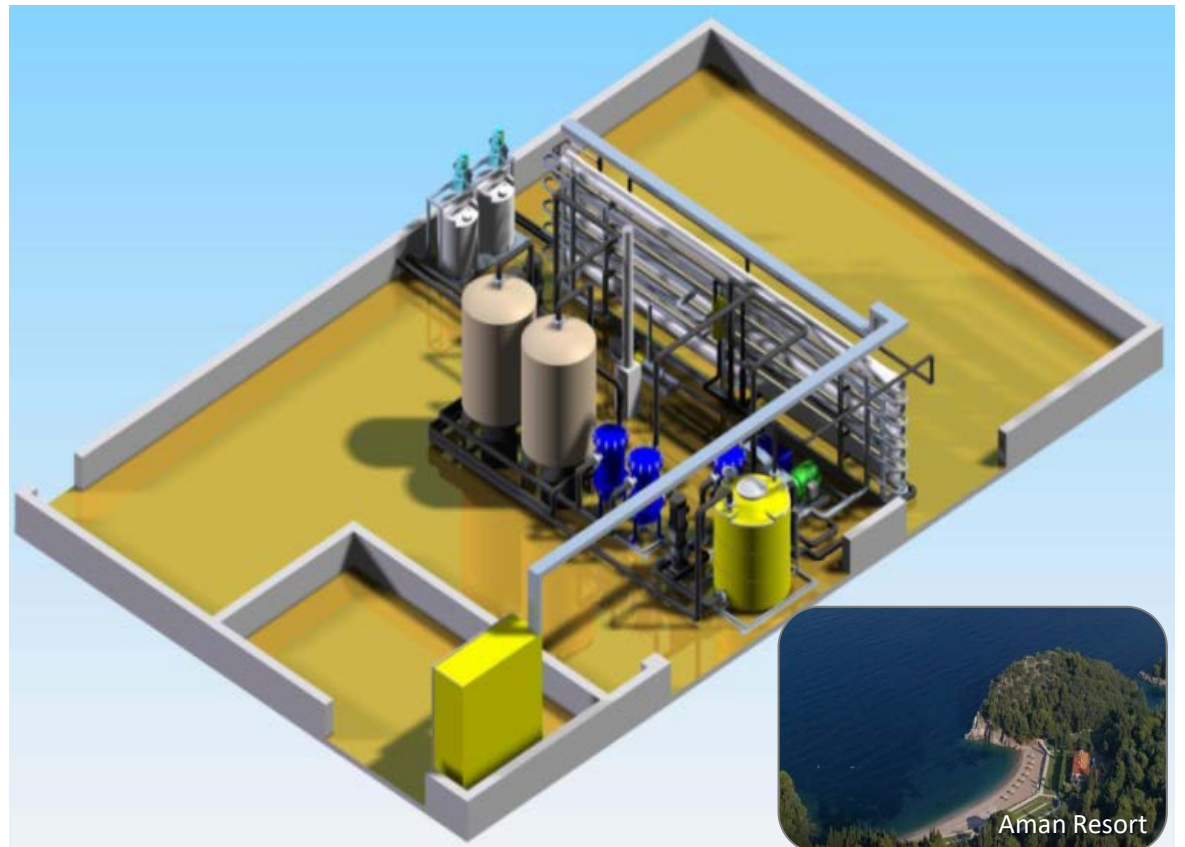
- Meets or exceed drinking water quality of latest edition of STANAG2136

CAPACITY

- From Seawater
: 300 ton/day

SPECIFICATION

- RO Membrane
: TFC Spiral wound, 8" dia
- Energy recovery system
: Pressure Exchanger (PX)



END USER / YEAR

- Amanpulo Resort
- Philippines
- Deployed in 2011

DESIGN CONCEPT

- System Consist
: Pretreatment UNIT(DMF) + SWRO UNIT
+ Post treatment Unit (U.V.)
- Seawater desalination for drinking water production

PRODUCT PORTFOLIO

TEST-BED UF/RO UNIT

for KOLON Environment Service

APPLICATION

- Water recycle

WATER QUALITY

- Less than 40 ppm TDS

CAPACITY

- 250 ton/day

SPECIFICATION

- Dimensions
: 3,400 x 10,000 x 2,500 mm
- Weight
: Approx. 7,000kg
- Power Consumption

At Normal Operation
: 35 kW

At Maximum Load
: 45 kW
- Equipment Control

: PLC Control w/ Touch PC



END USER / YEAR

- KOLON Environment Service
- Gimcheon city, Korea
- Deployed in 2012

DESIGN CONCEPT

- UF / RO Membrane Facilities
- Cleaning-In-Place (CIP) system
- HMI system for Data Collection
- Easy operation and maintenance

PRODUCT PORTFOLIO

MF Test Unit

for K-Water Research Institute

APPLICATION

- Research and Development
: Media Filtration test

CAPACITY

- From MF Module
: 120ton/day

SPECIFICATION

- Dimensions
: 2,300 x 1,300 x 2,540
- Weight
: 3,000 kg
- Power Consumption
: 9 kW
- Equipment Control
: HMI w/ PLC Control
Touch Screen



END USER / YEAR

- K-Water Research Institute
- Daejeon city, Korea
- Deployed in 2012

DESIGN CONCEPT

- Various operation mode
- MF membrane facilities
- HMI system for data collection
- Compact design

PRODUCT PORTFOLIO

NF Test Unit

for K-Water Research Institute

APPLICATION

- Research and Development
: Nano Filtration Test

WATER QUALITY

- Less than 500 ppm TDS

CAPACITY

- From NF Module
: 25ton/day

SPECIFICATION

- Dimensions
: 2,350 x 5,900 x 1,700 mm
- Weight
: 3,000 kg
- Power Consumption
: 11.5 kW
- Equipment control
: HMI w/ PLC Control
Touch Screen



END USER / YEAR

- K-Water Research Institute
- Daejeon city, Korea
- Deployed in 2012

DESIGN CONCEPT

- Various operation mode
- NF membrane facilities
- HMI system for data collection
- Compact design

PRODUCT PORTFOLIO

Containerized SWRO System for Daewoo Eng.&Const.

APPLICATION

- Drinking Water
- Construction Water

WATER QUALITY

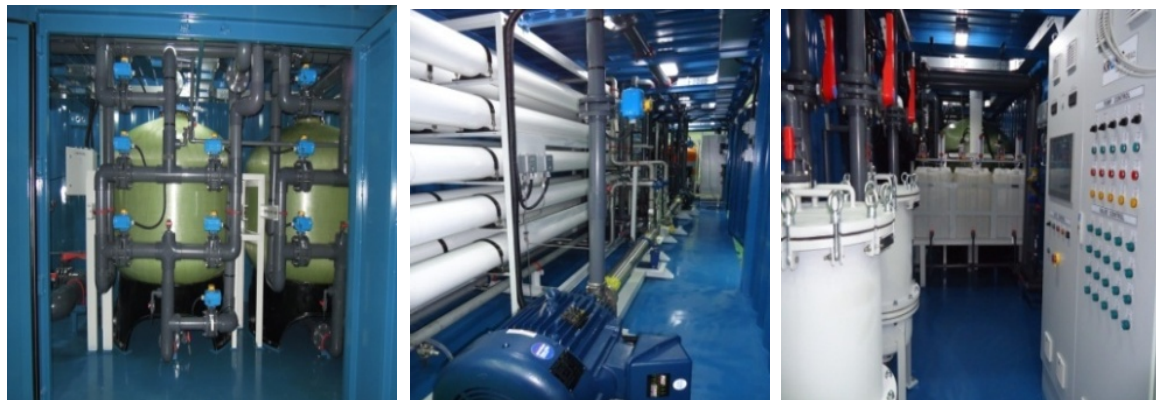
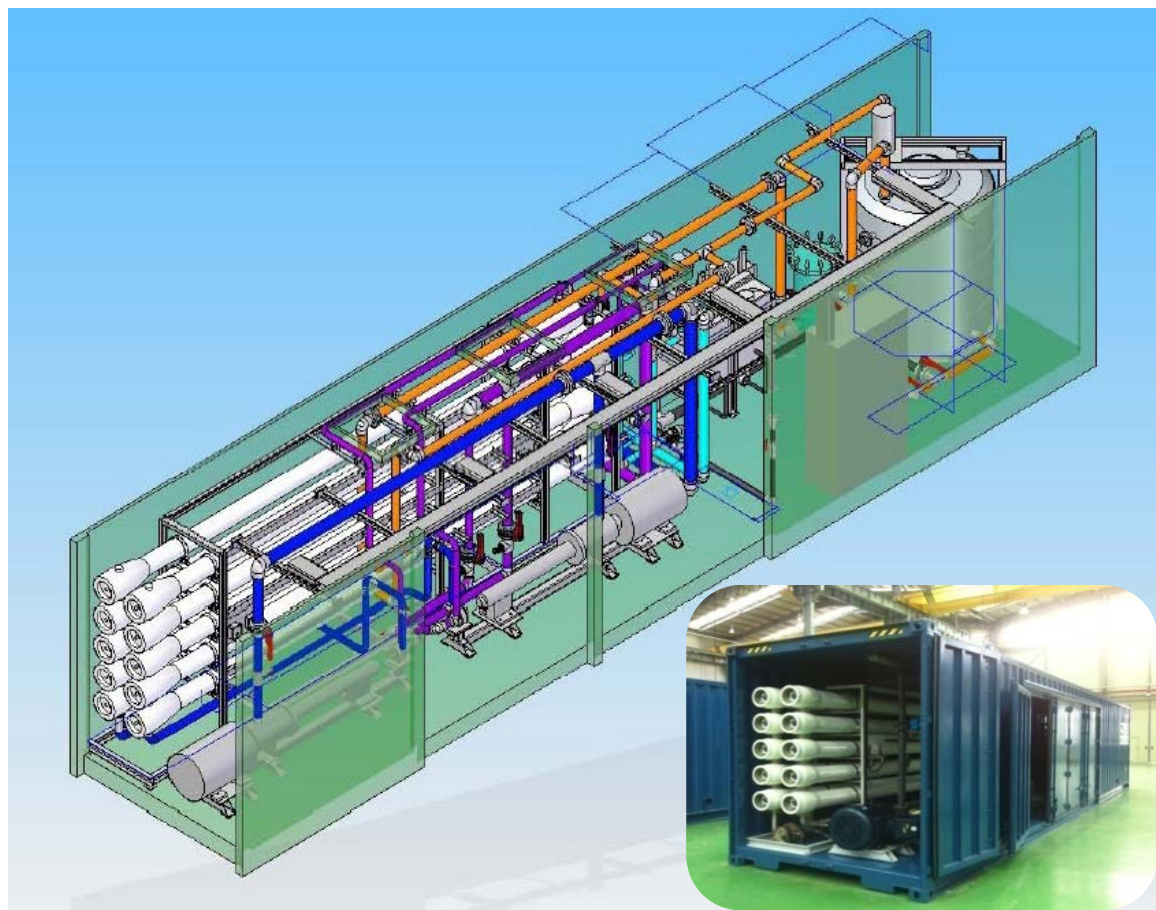
- Less than 500 ppm TDS

CAPACITY

- 648ton/day (27ton/hour)

SPECIFICATION

- Dimensions
40ft High Cubic Special
Container 2 sets
: 2,438 x 12,192 x 2,896 mm
- Power Consumption
At Normal Operation
: 110 kW
At Maximum Load
: 155 kW
- Equipment control
: PLC Control w/ Touch PC
- Low Pressure Piping
: PVC sch80
- High Pressure Piping
: Duplex 2205



END USER / YEAR

- Daewoo Engineering & Construction
- Deployed in 2012
- Libya Zwitina Combined Cycle Power Plant

DESIGN CONCEPT

- Easily installable modular Containerized System
- Operator friendly control interface
- Energy saving by High Pressure Energy Recovery System
: Turbine Type

PRODUCT PORTFOLIO

High Recovery BWRO System for “A” Company

APPLICATION

- Research and Development
: High recovery BWRO

WATER QUALITY

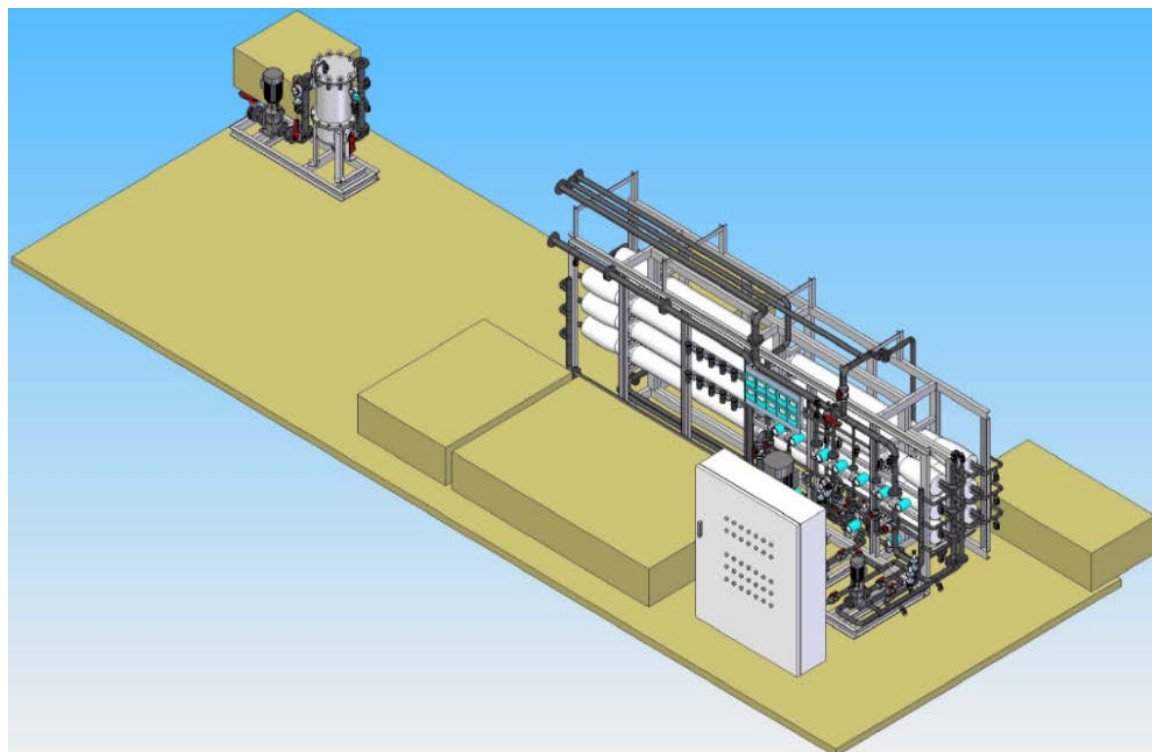
- Less than 100 ppm TDS

CAPACITY

- 450 ton/day

SPECIFICATION

- Dimensions
: 3,120 x 6,000 x 2,100 mm
- Weight
: Approx. 1,600 kg
- Power Consumption
: 22 kW
- Equipment Control
: HMI w/ PLC Control



END USER / YEAR

- “A” Company : Anonymity
- Seoul, Korea
- Deployed in 2012

DESIGN CONCEPT

- Compact design
- HMI system for DATA COLLECTION

PRODUCT PORTFOLIO

Seawater Desalination Pilot Plant for “A” company

APPLICATION

- Research and Development
: Seawater Desalination

WATER QUALITY

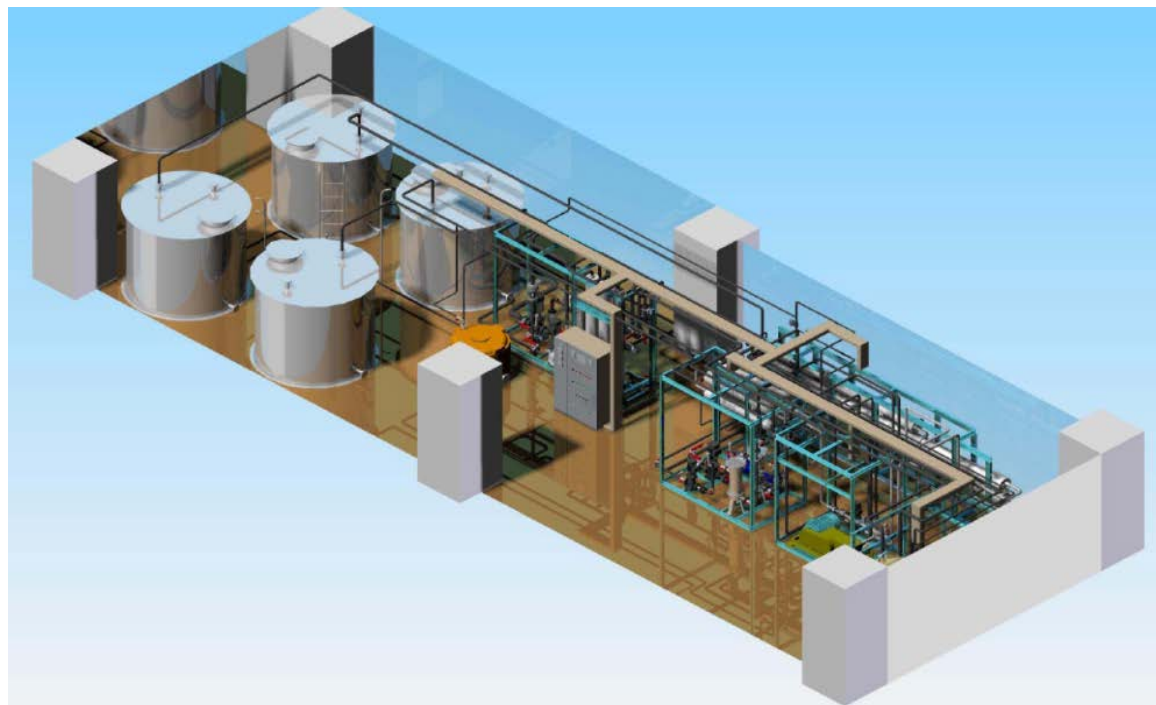
- Less than 100 ppm TDS

CAPACITY

- 40ton/day

SPECIFICATION

- Dimensions
: 3,120 x 6,000 x 2,100 mm
- Weight
: Approx. 1,600 kg
- Power Consumption
: 22 kW
- Equipment Control
: HMI w/ PLC Control



END USER / YEAR

- “A” Company : Anonymity
- Seoul, Korea
- Deployed in 2012

DESIGN CONCEPT

- Compact design
- HMI system for DATA COLLECTION

PRODUCT PORTFOLIO

Seawater Treatment System for Hoe-yuk Island

APPLICATION

- Seawater desalination
- Remote residential communities

WATER QUALITY

- Less than 500 ppm TDS

CAPACITY

- 20 ton / day

SPECIFICATION

- Operating Pressure
: 50 ~ 65 kg/cm²
- Operating Temp.
: 4 ~ 35 °C
- Operating Salinity (Maximum)
: 40,000 ppm TDS
- Power Consumption
: 6.6 kW
- Equipment Control
: PLC Control w/ Touch PC



END USER / YEAR

- Bo-Rung City Water and Wastewater Agency
- Hoe-yuk Island, Korea
- Deployed in 2012

DESIGN CONCEPT

- Operator friendly control interface
- Low maintenance requirement
- Water level transmission system installed
- Safe and reliable

PRODUCT PORTFOLIO

Seawater Treatment System for Jang-go Island

APPLICATION

- Seawater desalination
- Remote residential communities

WATER QUALITY

- Less than 500 ppm TDS

CAPACITY

- 75 ton / day

SPECIFICATION

- Operating Pressure
: 50 ~ 65 kg/cm²
- Operating Temp.
: 4 ~ 35 °C
- Operating Salinity (Maximum)
: 40,000 ppm TDS
- Power Consumption
: 20.7 kW
- Equipment Control
: PLC Control w/ Touch PC



END USER / YEAR

- Bo-Rung City Water and Wastewater Agency
- Jan-go Island, Korea
- Deployed in 2012

DESIGN CONCEPT

- Operator friendly control interface
- Low maintenance requirement
- High capacity and compact size
- Safe and reliable

PRODUCT PORTFOLIO

Ultra-Pure Water System for NFRI

APPLICATION

- Ultra-Pure water production

WATER QUALITY

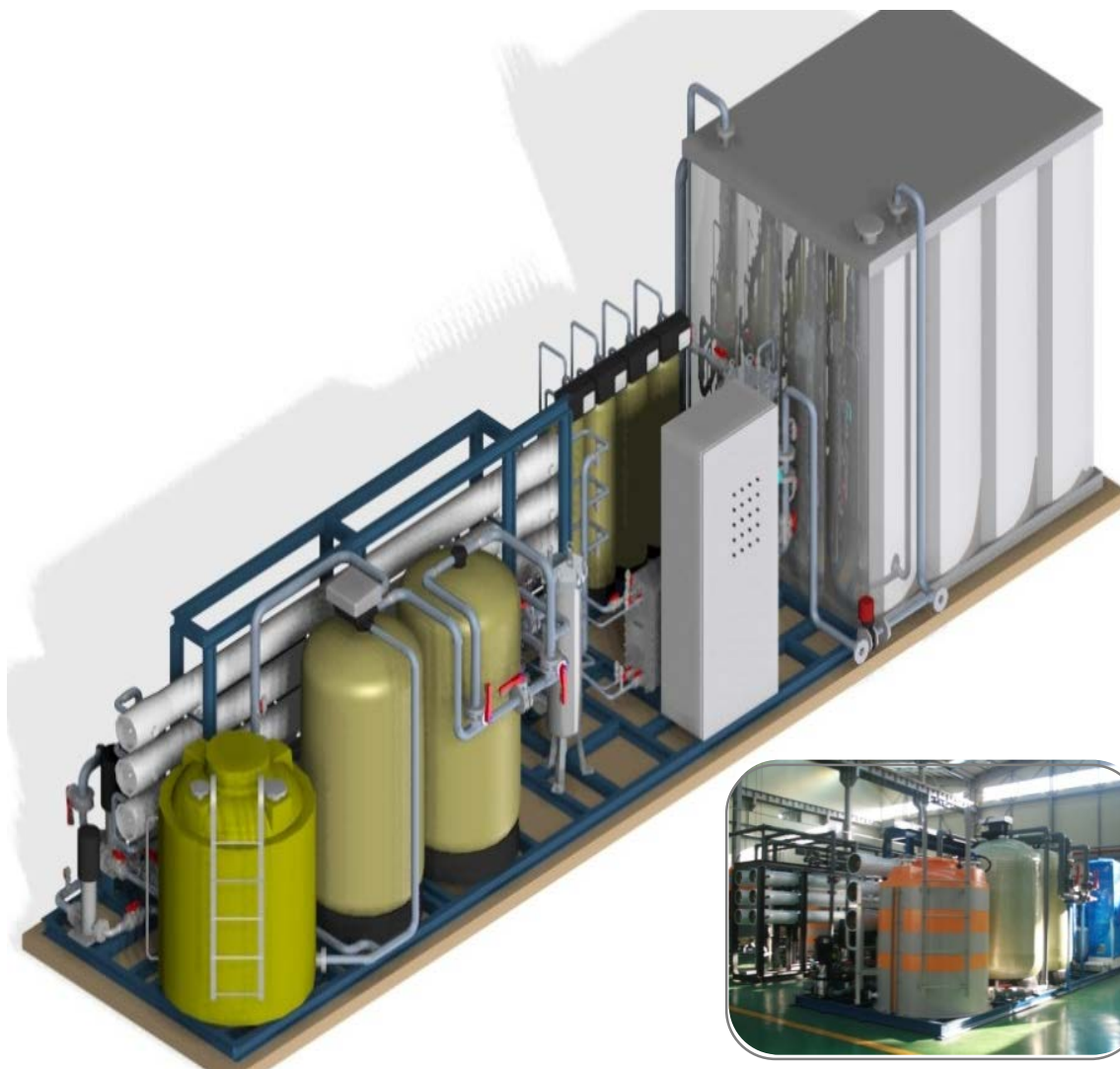
- Less than 1.0 ppm TDS
- Resistivity : 17 ~ 18.2 MΩ

CAPACITY

- 240 ton/day

SPECIFICATION

- Dimensions
: 2,100 x 9,300 x 2,500 mm
- Operating Pressure
: 10 ~ 12 kg/cm²
- Operating Salinity (Maximum)
: 500 ppm TDS
- Power Consumption
: 30.0 kW
- Equipment Control
: PLC Control w/ Touch PC



END USER / YEAR

- National Fusion Research Institute(NFRI)
- Gunman City, Korea
- Deployed in 2012

DESIGN CONCEPT

- Ultra-Pure water production
- Customized solutions : respond to all specific requirements
- State-of-the-art engineering : Mixed Bed Plusher and EDI Unit
- Reliability and guaranteed efficiency

PRODUCT PORTFOLIO

S3 SHUWEIHAT IPP Treatment System For SAPCO Power Plant

APPLICATION

- Construction power plant
- Boiler water

WATER QUALITY

- Desalinated water (Service Water)
 - TDS at 25°C : $< 50 \mu\text{S/cm}$
- Demineralized water
 - Conductivity at 25°C : $< 0.2 \mu\text{S/cm}$

CAPACITY

- From RO Package
 - : 5,280 ton/day
- From MBP Package
 - : 2,200 ton/day

SPECIFICATION

- Pretreatment system
 - : Auto Strainer + UF
- RO system
 - : SWRO + BWRO +
Chemical dosing system
- Demi system
 - : Mixed Bed Polisher



END USER / YEAR

- SAPCO
- Abu Dhabi, UAE
- Deployed in 2012

DESIGN CONCEPT

- Suitable for Power Plant
- Pure-water Production

PRODUCT PORTFOLIO

KROSYS

Magma Seawater Desalination Plant For Jeju Seawater Agency

APPLICATION

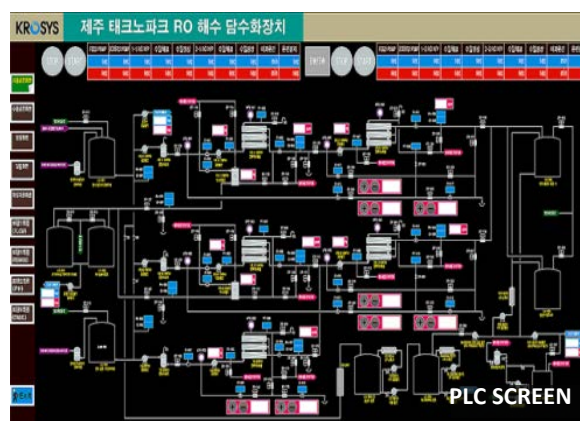
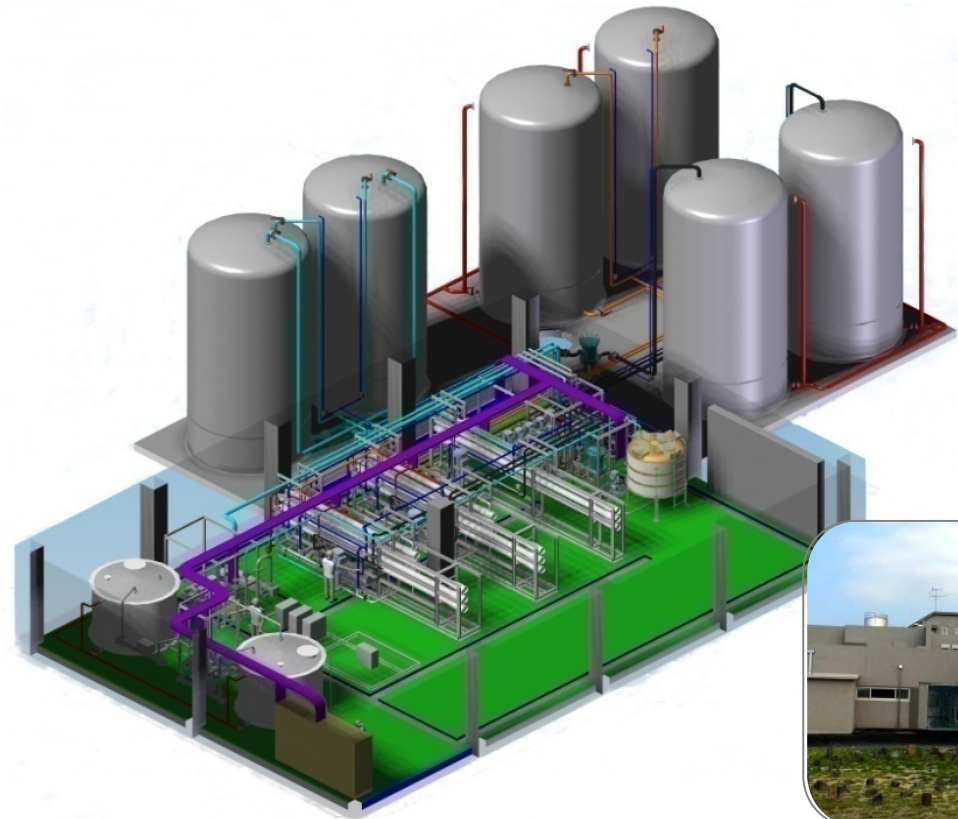
- Magma seawater desalination

WATER QUALITY

- Less than 10 ppm TDS

CAPACITY

- From Seawater
: 500 ton/day
(250 ton/day X 2 blocks)



END USER / YEAR

- Jeju seawater agency
- Jeju, Korea
- Deployed in 2013

DESIGN CONCEPT

- System Consist
: SWRO UNIT + BWRO UNIT
- Concentrated water reuse

PRODUCT PORTFOLIO

Water Treatment Package

For LNG Floating storage & Regasification facilities

APPLICATION

- LNG Floating Storage & Regasification facilities

WATER QUALITY

- Less than 500 ppm TDS
- Meets or exceed drinking water quality of latest edition of WHO Standard

CAPACITY

- From Brackish Water
: 7.7 ton/hour

SPECIFICATION

- Dimensions
: 8,000 x 2,200 x 2,400 mm
- Weight
: 5,000 kg
- Power Consumption
: 30 Kw



CLIENT / YEAR

- PT REKAYASA INDUSTRIES
- Deployed in 2013
- Lampung, Indonesia

DESIGN CONCEPT

- System Consist
: MMF Unit + RO Unit + AC Unit + CIP Unit
- High IP Rating for Outdoor Installation

PRODUCT PORTFOLIO

Water Treatment System for Construction Site for UGCC

APPLICATION

- Drinking & Utility water supply on a construction site

WATER QUALITY

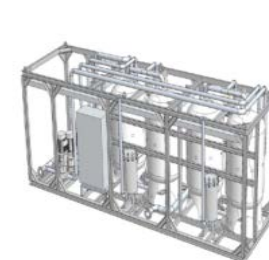
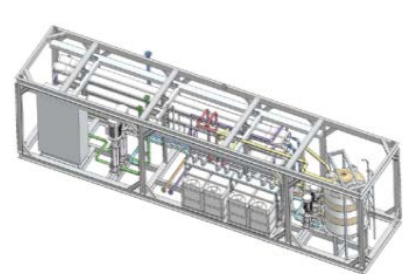
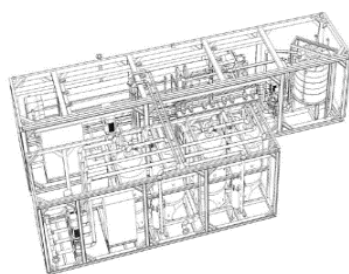
- Less than 500 ppm TDS
- Meets or exceed drinking water quality of latest edition of WHO and NSF Standard

CAPACITY

- From Brackish Water
: 600 ton/day

SPECIFICATION

- Dimensions
Pretreatment Unit
: 2,030 x 6,600 x 2,505 mm
BWRO Unit
: 2,265 x 10,000 x 2,350 mm
- Weight
Pretreatment Unit
: 2,600 Kg
BWRO Unit
: 4,950 kg
- Power Consumption
: 70 Kw



CLIENT / YEAR

- Samsung Engineering
- Deployed in 2013
- Surgil, Uzbekistan

DESIGN CONCEPT

- System Consist
: MMF Unit + BWRO Unit
- Installation in a container for delivery
- High recovery

PRODUCT PORTFOLIO

RO Membrane Test Unit for K-water

APPLICATION

- 8" membrane test

DESIGN CONDITION

- Feed Water
Capacity : 200 ton/day
TDS : 100 ~ 10,000 mg/L
Temp. : 25°C
- Product Water
BWRO : 30 ton/day
- Recovery Rate
15 %



END USER / YEAR

- K-water
- Daejeon, Korea
- Deployed in 2014

DESIGN CONCEPT

- System Consist
: Chiller + Cartridge Filter + BWRO UNIT
- Circulation system of concentration and product water
- constant flux and constant pressure operation

PRODUCT PORTFOLIO

Containerized BWRO System for IRAQ Badra CPF Phase 2 PJT

APPLICATION

- Drinking & Utility water supply on a construction site

WATER QUALITY

- Less than 500 ppm TDS
- Meets or exceed drinking water quality of latest edition of WHO and NSF Standard

CAPACITY

- From Brackish Water
: 400 ton/day

SPECIFICATION

- Dimensions
: 12,180 x 2,438 x 2,897 mm
- Weight
: 12 ton (at dry)
- Power Consumption
: 35 kW



CLIENT / YEAR

- Samsung Engineering
- Deployed in 2014
- Badra, Iraq

DESIGN CONCEPT

- System Consist
: Sand Filter + Micro Filter + BWRO Unit
- High recovery : 70%
- ISO container

PRODUCT PORTFOLIO

Containerized SWRO System for Ad Duwayhi Gravity-CIL GOLD PJT

APPLICATION

- Drinking & Utility water supply in the processing plant and the village

WATER QUALITY

- 1ST Pass RO Unit
Less than 500 ppm TDS
- 2ND Pass RO Unit
Less than 2.19 ppm TDS

CAPACITY

- 1ST Pass RO Unit
: 192 ton/day
- 2ND Pass RO Unit
: 124.8 ton/day



END USER / YEAR

- MG BM(Ma'aden Gold & Base Metals Co.)
- Deployed in 2014
- Ad Duwayhi, Saudi Arabia

DESIGN CONCEPT

- System Consist
: Auto Disc + Micro Filter + 1ST Pass RO Unit + 2ND Pass RO Unit + CIP
- Recovery Rate
1st Pass RO Unit : 40%
2nd Pass RO Unit : 80%
Total system : 35%

PRODUCT PORTFOLIO

BWRO System for NR BWRO PJT

APPLICATION

- Supply industrial water

WATER QUALITY

- Less than 300 ppm TDS

CAPACITY

- From Brackish Water
: 150 ton/day

SPECIFICATION

- Dimensions
: 8,000 x 2,200 x 2,920 mm
- Weight
: 3,364 kg (at dry)
- Power Consumption
: 16.29 kW



END USER / YEAR

- Nihon Recycle Corporation
- Deployed in 2014
- Japan

DESIGN CONCEPT

- System Consist
: UF Unit + BWRO Unit
- Indoor use
- Automatic operation, PLC + Touch screen

PRODUCT PORTFOLIO

Containerized Pre-treatment System for Algeria TIMIMOUN PJT

APPLICATION

- Supply drinking water on a construction site

CAPACITY

- From well water
: 800 ton/day

SPECIFICATION

- Dimensions
: 12,190 x 2,440 x 2,930 mm
- Weight
: 2,970 kg
- Power Consumption
: 46 kW



END USER / YEAR

- Samsung Engineering
- Algeria
- Deployed in 2014

DESIGN CONCEPT

- System Consist
: Booster Pump + Dual-Media Filter + Activated Carbon Filter
+ Micro Filter + UV

PRODUCT PORTFOLIO

RO Membrane Wet Test Unit for LG Chem, Ltd.

APPLICATION

- RO Membrane Wet Test Unit

WATER QUALITY

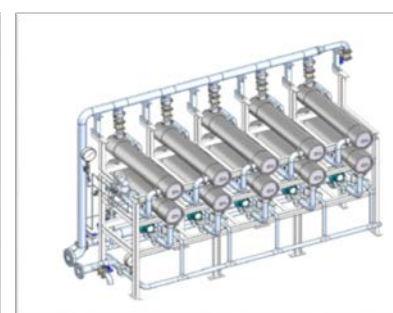
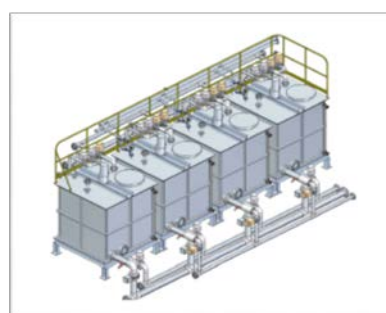
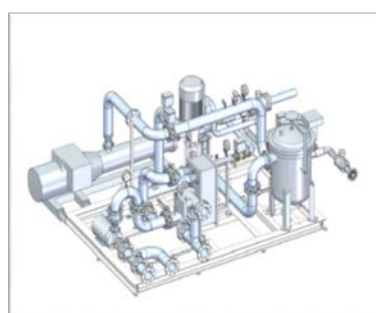
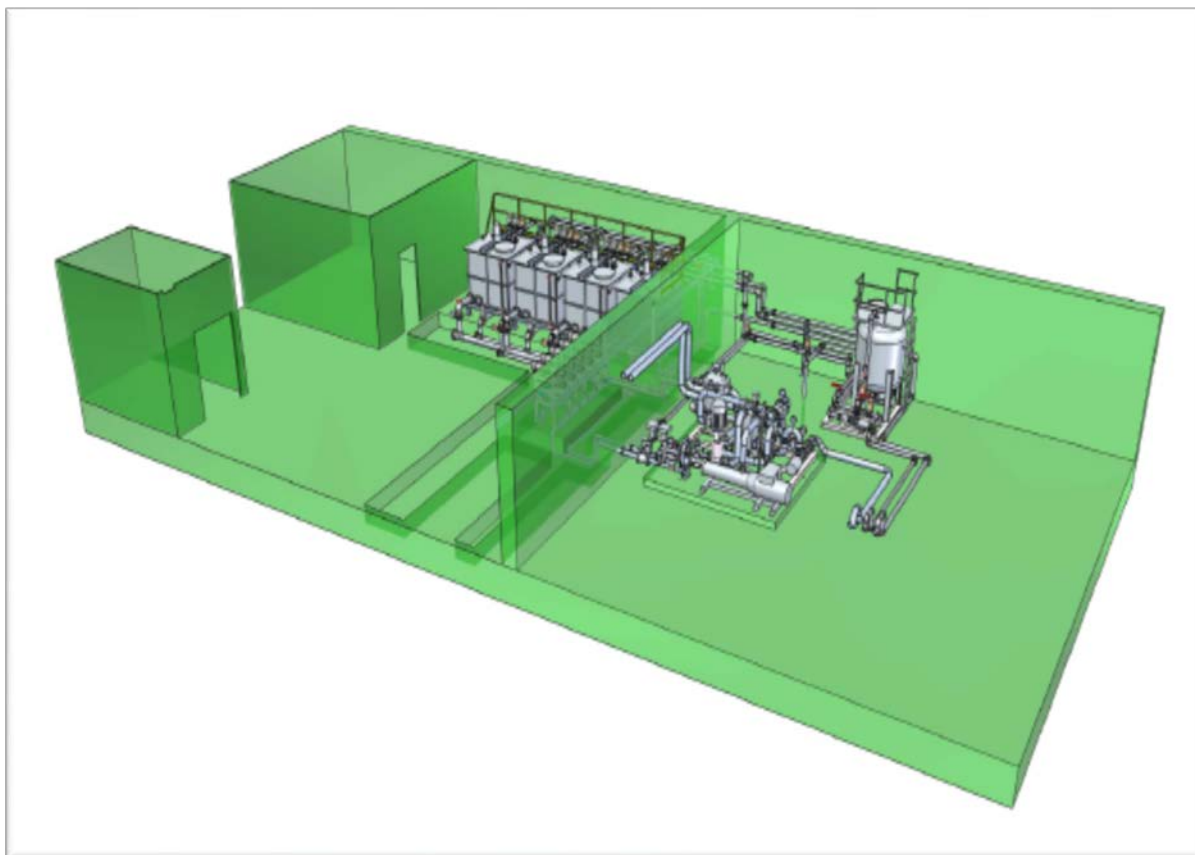
- Less than 500 ppm TDS

CAPACITY

- SWRO Permeate 360 m³/day

SPECIFICATION

- Dimensions
: 7,000 x 14,000 mm
- Weight
: kg
- Power Consumption
: 270 kW



END USER / YEAR

- LG Chem, Ltd.
- Cheongju, KOREA
- Deployed in 2015

DESIGN CONCEPT

- A/C Filter + Cartridge Filter + BWRO / SWRO

PRODUCT PORTFOLIO

Pilot Test Unit of Water Purification System For Yangon Bottle Drinking Water PJT

APPLICATION

- Pilot test unit of water purification system

WATER QUALITY

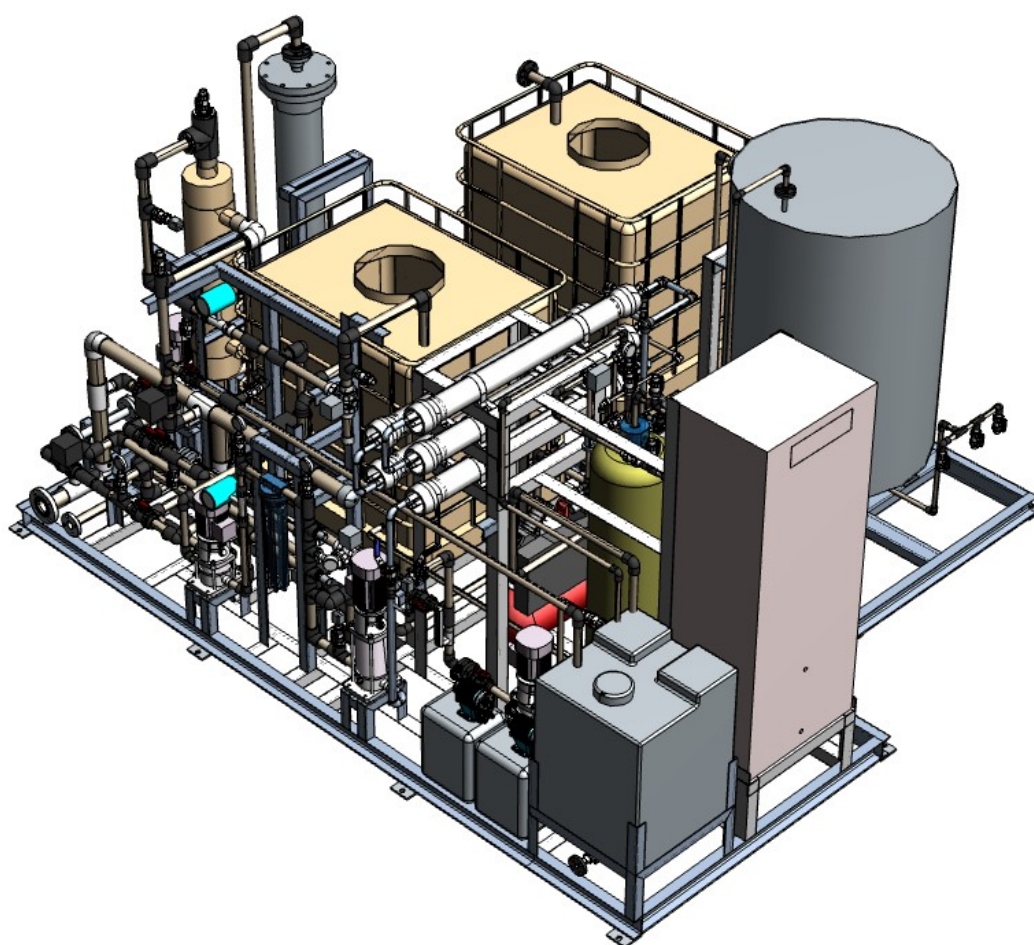
- Drinking water standard

CAPACITY

- 20 Cubic meter / day

SPECIFICATION

- Dimensions
: 3,900 x 3,400 x 2,310 mm
- Weight
: 1,782kg
- Power Consumption
: 9.4 kW



END USER / YEAR

- JFE Engineering Corp.
- Yangon, MYANMAR
- Deployed in 2015

DESIGN CONCEPT

- Mn Filter -> UF- > BWRO -> Re-Mineral Filter

PRODUCT PORTFOLIO

Seawater Desalination Plant for Jeju Seawater Agency PJT

APPLICATION

- Sea water Desalination

WATER QUALITY

- Less than 10 ppm TDS

CAPACITY

- RO Permeate 1,000 m³/day

SPECIFICATION

- Dimensions
: 27,500 x 17,000 mm
- Weight
: kg
- Power Consumption
: 300 kW



END USER / YEAR

- Jeju Seawater Agency.
- Jeju, Korea
- Deployed in 2016

DESIGN CONCEPT

- SWRO + BWRO

PRODUCT PORTFOLIO

Sea water Desalination for Iraq Zubair PJT.

APPLICATION

- Sea water Desalination

WATER QUALITY

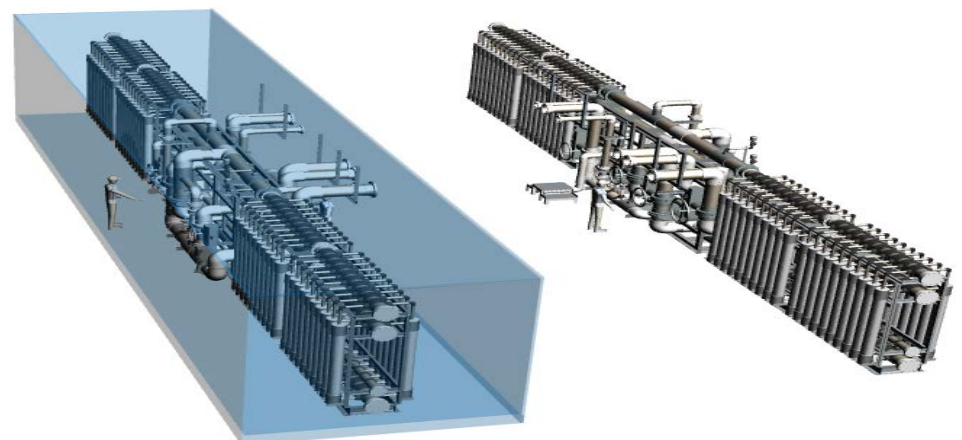
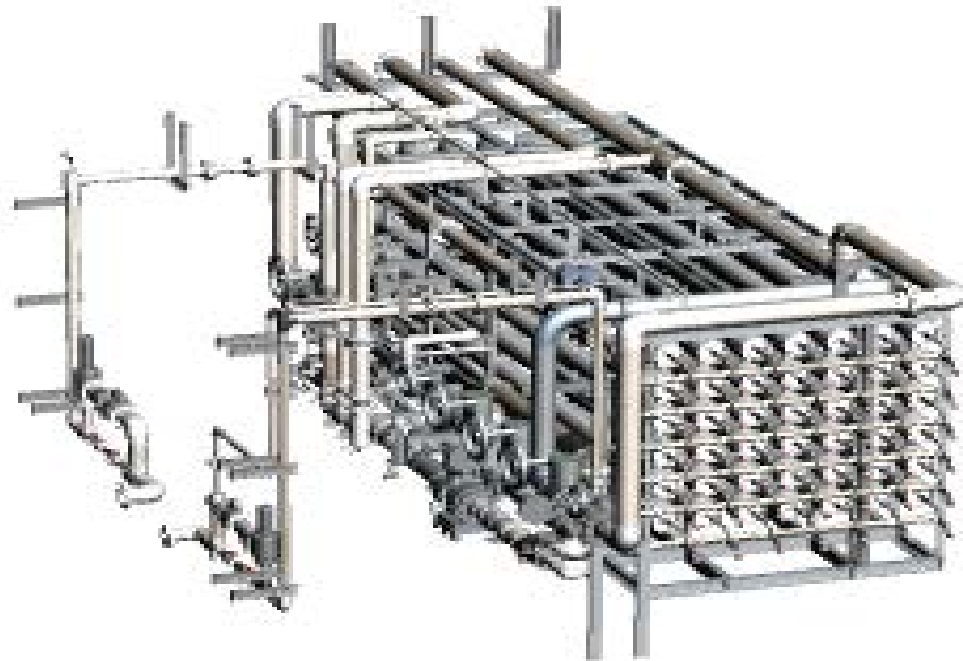
- Less than 500 ppm TDS

CAPACITY

- SWRO Permeate 3,800 m³/day

SPECIFICATION

- Dimensions
 - : RO / 12,000 x 6,500 mm
 - : UF / 22,000 x 4,500 mm
- Weight
 - : kg
- Power Consumption
 - : kW

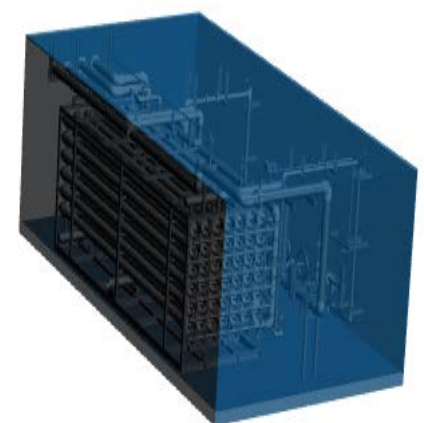


END USER / YEAR

- Coway Entech
- Zubair, Iraq
- Deployed in 2016

DESIGN CONCEPT

- UF + SWRO



PRODUCT PORTFOLIO

Seawater Desalination Plant for Morocco Safi PJT

APPLICATION

- RO & EDI Containerized system

WATER QUALITY

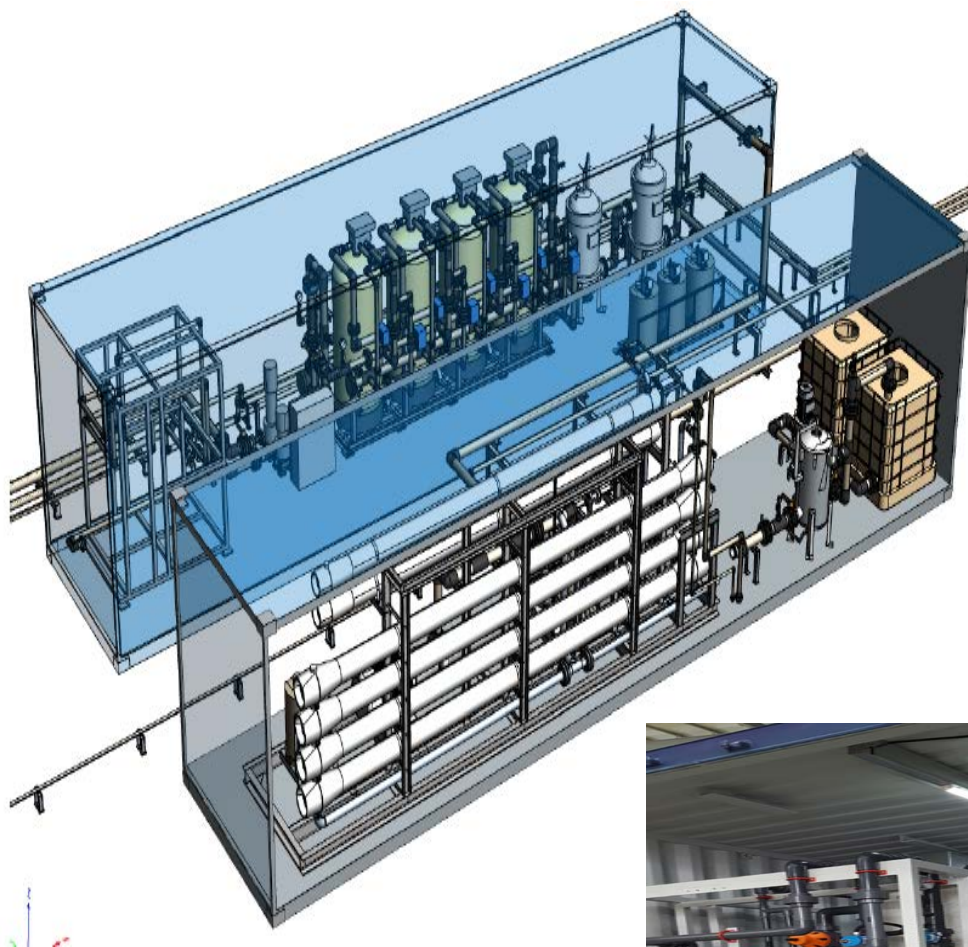
- Less than 500 ppm TDS

CAPACITY

- RO Permeate 225 m³/day

SPECIFICATION

- Dimensions
: 40ft Container x 2set
- Weight
: kg
- Power Consumption
: 130 kW



END USER / YEAR

- Daewoo Engineer'g & Con.
- Morocco, Safi
- Deployed in 2016

DESIGN CONCEPT

- DMF + SWRO + BWRO + EDI

PRODUCT PORTFOLIO

Zero Emission Pilot Unit for Power Plant Project

APPLICATION

- Zero Emission Pilot Unit

WATER QUALITY

-

CAPACITY

- Feed Water 200 m³/day

SPECIFICATION

- Dimensions
: 25,000 x 9,000 mm
- Weight
: kg
- Power Consumption
: 50 kW



END USER / YEAR

- Hyundai Engineer'g & Con.
- Dangjin, KOREA
- Deployed in 2017

DESIGN CONCEPT

- SWRO + FO

PRODUCT PORTFOLIO

FO-RO Hybrid Desalination Unit for DaeLim Industrial Co.

APPLICATION

- FO-RO Hybrid Desalination

WATER QUALITY

-

CAPACITY

- Feed Water 40 m³/day

SPECIFICATION

- Dimensions
: 25,000 x 7,700 mm
- Weight
: kg
- Power Consumption
: 270 kW



END USER / YEAR

- DaeLim Industrial Co.
- Yeosu, KOREA
- Deployed in 2017

DESIGN CONCEPT

- UF + SWRO + FO

PRODUCT PORTFOLIO

Water Treatment Unit for Power Plant Project

APPLICATION

- Engine Cooling water

WATER QUALITY

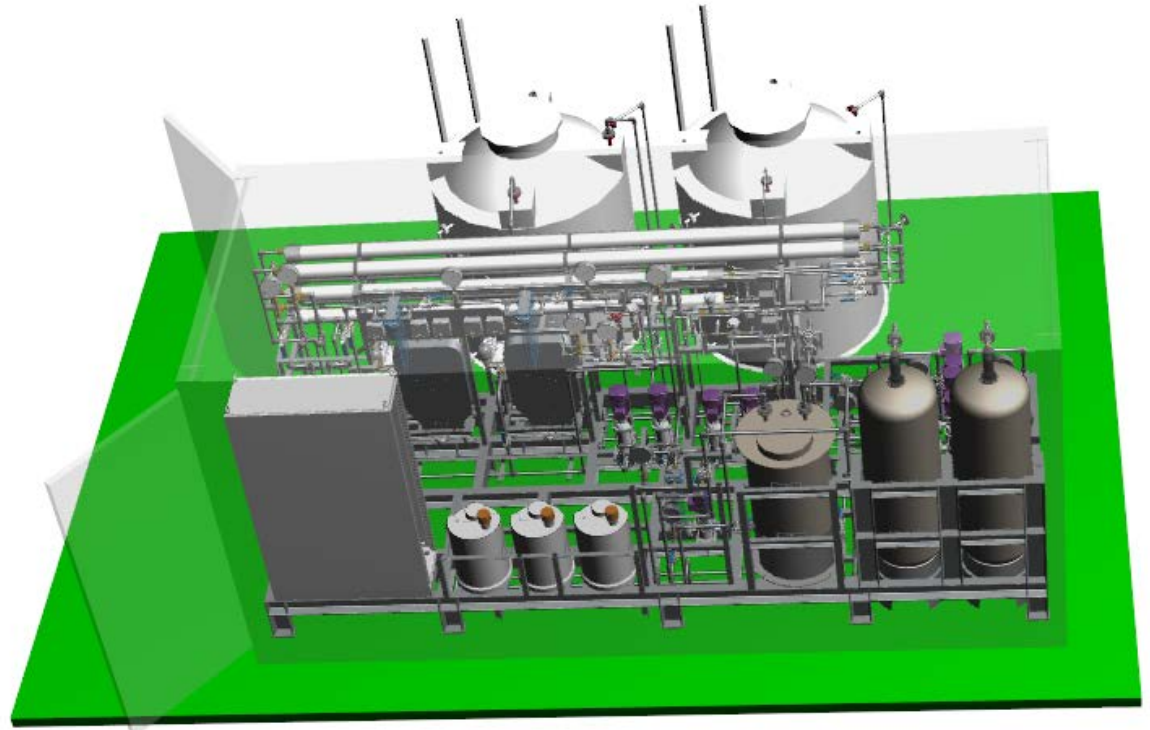
- Less than 10 ppm TDS

CAPACITY

- RO Permeate 12 m³/day

SPECIFICATION

- Dimensions
: 20ft Container
- Weight
: 27,700kg
- Power Consumption
: 25 kW



END USER / YEAR

- PLM
- Indonesia
- Deployed in 2018

DESIGN CONCEPT

- MF + SWRO + SWRO

PRODUCT PORTFOLIO

Potabilization System for Dominica Punta Catalina PJT

APPLICATION

- Potabilization system

WATER QUALITY

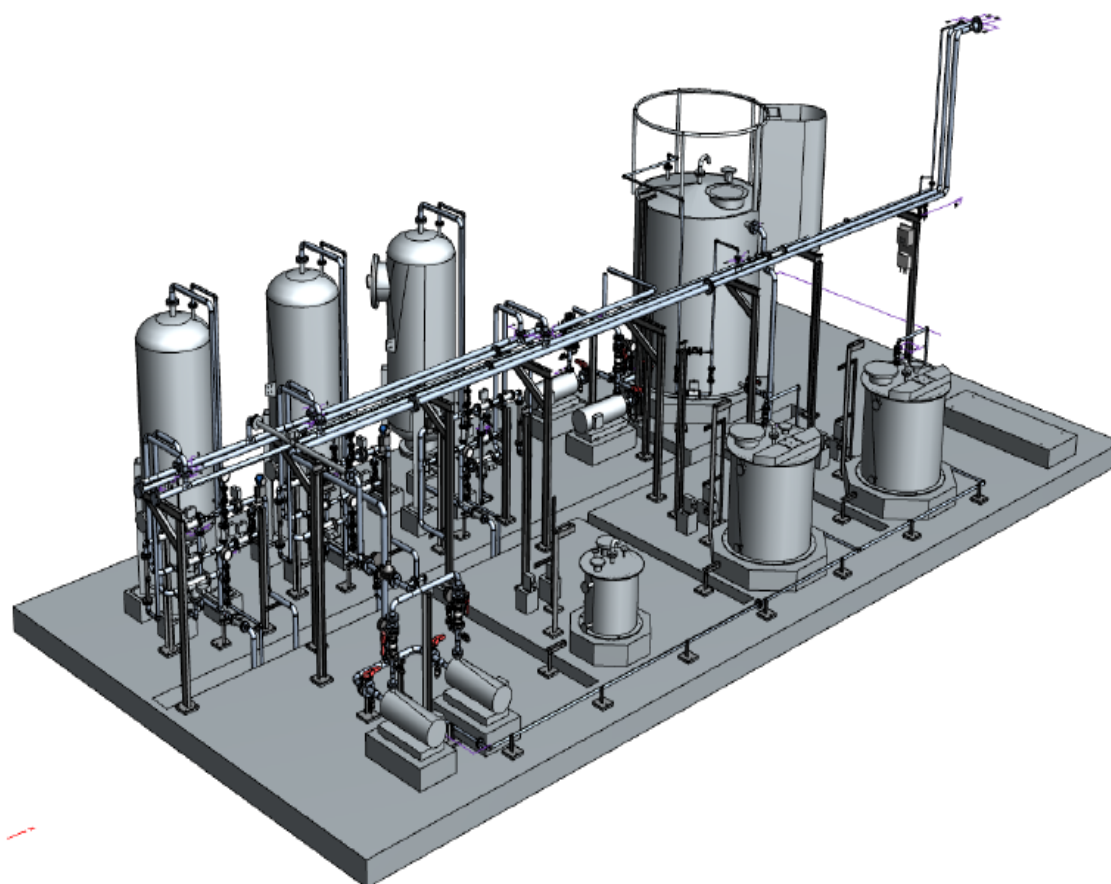
- Less than 500 ppm TDS

CAPACITY

- Product Water 240 m³/day

SPECIFICATION

- Dimensions
: 14,500 x 7,000 mm
- Weight
: kg
- Power Consumption
: 40 kW



END USER / YEAR

- Consorcio Odebrecht
- Dominican Republic
- Deployed in 2016

DESIGN CONCEPT

- A/C Filter + Chemical Dosing System

PRODUCT PORTFOLIO

Potabilization system using MD module

APPLICATION

- Potabilization system using MD module

WATER QUALITY

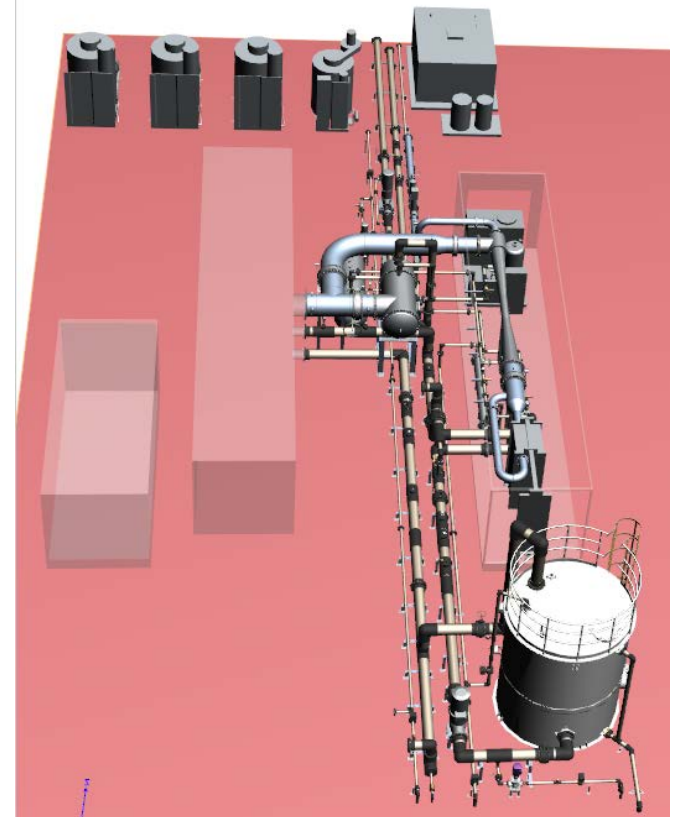
- Less than 10 ppm TDS

CAPACITY

- MD Permeate 200 m³/day

SPECIFICATION

- Dimensions
: 30,000 x 19,000 mm
- Weight
: kg
- Power Consumption
: 190 kW



END USER / YEAR

- kookmin university
- Pusan, KOREA
- Deployed in 2017

DESIGN CONCEPT

- MD + TVC + Boiler + Cooler

PRODUCT PORTFOLIO

Water Treatment Plant for LG-Hitachi Water Solution

APPLICATION

- Water Treatment Plant

WATERQUALITY

- Less than 500 ppm TDS

CAPACITY

- RO: 1000 TPD
- MF: 2100 TPD

SPECIFICATION

- Dimensions
- Weight
: kg



END USER / YEAR

- LG-Hitachi Water Solution
- Haiphong, Vietnam
- Deployed in 2018

DESIGN CONCEPT

- MF + ACF + Softener + MMF + RO + Etc.

PRODUCT PORTFOLIO

Purified Water Plant for Korea National Oil Corporation

APPLICATION

- Purified Water

WATER QUALITY

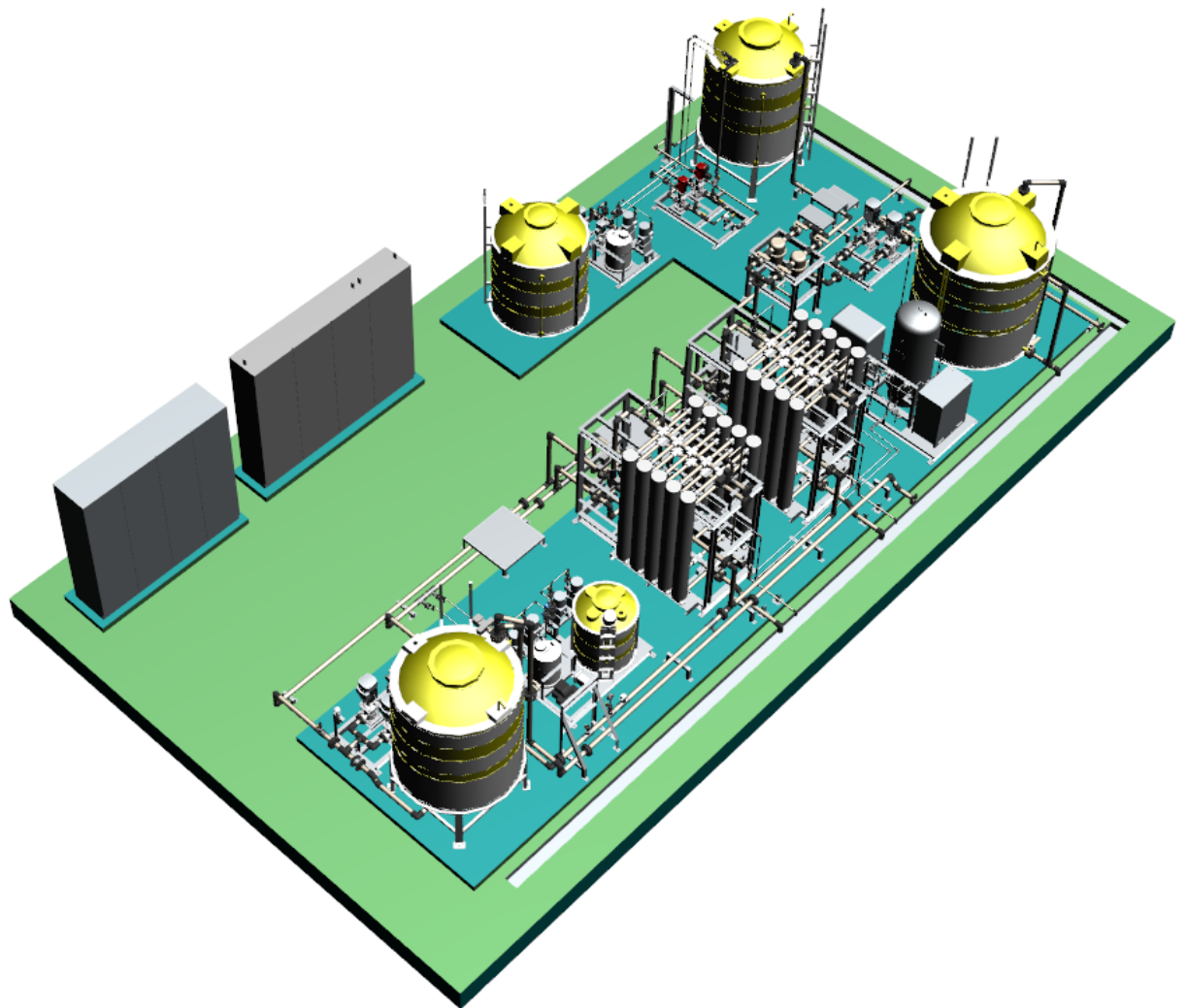
-

CAPACITY

- Product Water 580m³/day

SPECIFICATION

- Dimensions
: 15,400 x 8,500 mm
- Weight
: kg
- Power Consumption
: 25 kW



END USER / YEAR

- Korea National Oil Corporation
- Geoje, KOREA
- Deployed in 2018

DESIGN CONCEPT

- Auto Strainer + UF + CIP + Neutralization system

PRODUCT PORTFOLIO

Purified Water Plant for Incheon Metropolitan City

APPLICATION

- Potable Water

WATER QUALITY

- 180ppm TDS

CAPACITY

- Product Water
 - Ogjudong : 370m²/day
 - Seonjindong : 180m²/day
 - Molaeuldong : 50m²/day

SPECIFICATION

- Dimensions
 - Ogjudong : 67m x 10m
 - Seonjindong : 35m x 10m
 - Molaeuldong : 19m x 13m
- Power Consumption
 - Ogjudong : 147kw
 - Seonjindong : 112kw
 - Molaeuldong : 59kw



END USER / YEAR

- Incheon Metropolitan City
- Daecheong Island, KOREA
- Deployed in 2021

DESIGN CONCEPT

- MF + Auto Strainer + UF + Micro filter + RO system

PRODUCT PORTFOLIO

Purified Water Plant for Incheon Metropolitan City

APPLICATION

- Potable Water

WATER QUALITY

- 180ppm TDS

CAPACITY

- Product Water
 - Jungburi : 490m³/day
 - Seoburi : 240m³/day
 - Dangseom : 20m³/day

SPECIFICATION

- Dimensions
 - Jungburi : 42m x 8.4m
 - Seoburi : 22m x 12.5m
 - Dangseom : 9.2m x 6m
- Power Consumption
 - Jungburi : 135kw
 - Seoburi : 81kw
 - Dangseom : 30kw



END USER / YEAR

- Incheon Metropolitan City
- Daeyeonpyeong Island, KOREA
- Deployed in 2021

DESIGN CONCEPT

- MF + Auto Strainer + UF + Micro filter + RO system

PRODUCT PORTFOLIO

Purified Water Plant for Ship Mounting

APPLICATION

- Research & Development for Ship Mobility
- Seawater Desalination

WATER QUALITY

- 500ppm TDS

CAPACITY

- Product Water
- 300~450 m³/day
(Variable Type)

SPECIFICATION

- Dimensions
-UF Skid : 8.4m x 2.36 x 2.5m
-RO Skid : 8.0m x 1.85m x 2.5m
- Weight
-UF Skid : 3,900kg
-RO Skid : 5,950kg
- Power Consumption
-4.61 kwh/ton



END USER / YEAR

- KookMin University
- Deployed in 2021

DESIGN CONCEPT

- Auto Strainer + UF + Micro filter + ERI + RO system

Other Systems

We also supply various range of marine equipment for both military and commercial vessels and pleasure crafts. With accumulated know-how and experience in the system operation and service, KROSYS guarantee the best quality.



PRODUCT PORTFOLIO

Solar Powered Water Supply Unit For Republic of Congo

APPLICATION

- Supply drinking water to local residents

CAPACITY

- From Deep well
: 4 ton/day

SPECIFICATION

- Dimensions
: 6,000 x 6,000 x 4,100 mm
- Weight
: 1.200 kg
- Power Consumption
: 465 W



CLIENT / YEAR

- STX COPERATION
- Republic of Congo
- 2,000 units deployed in 2013 ~ 2014

DESIGN CONCEPT

- System Consist
: Solar pump unit + Ozone sterilizer unit + water storage tank
- Solar powered